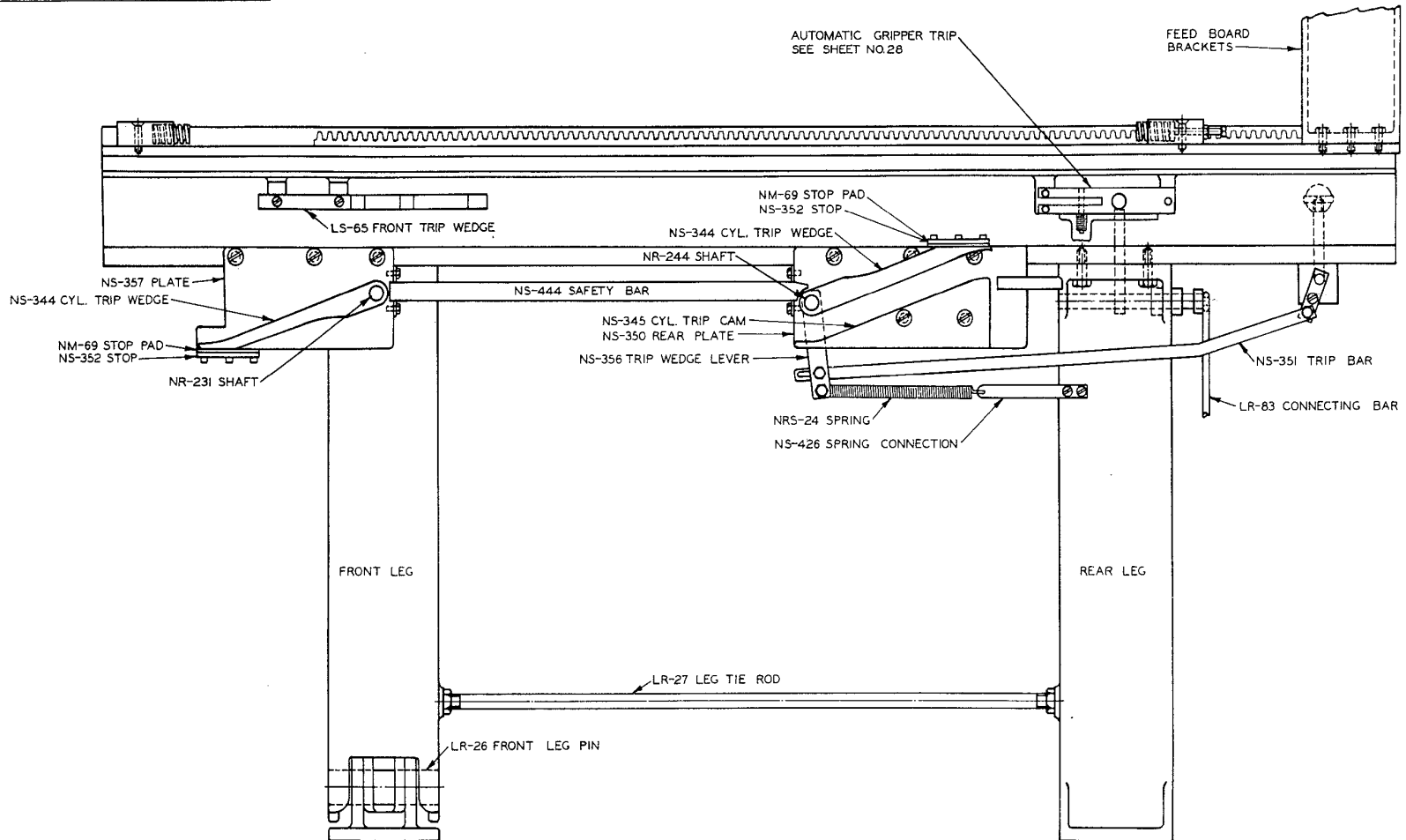


**LUBRICATION**

A MEDIUM WEIGHT AUTO OIL IS RECOMMENDED FOR ALL MOVING PARTS.  
A LIGHT FILM OF OIL SHOULD BE KEPT ON THE POLISHED SURFACES OF TRIP WEDGES AND CAMS AT ALL TIMES.



PART NO.	PRICE	F.U.	L.U.
LR-26	1.00	4260	
LR-27	1.00	II	
LR-83	.30	II	
LS-65	.85	II	
NM-69	.10	6363	
NRS-24	.30	II	
NS-344	3.20	II	
NS-345	5.25	II	
NS-350	4.35	II	
NS-351	1.00	II	
NS-352	.20	II	
NS-356	.45	II	
NS-357	3.90	II	
NS-426	.25	II	
NS-444	2.50	II	
NR-231	.10	II	
NR-244	.25	II	

**TRIP SIDE**

**NO. 320G VANDERCOOK HAND PROOF PRESS**